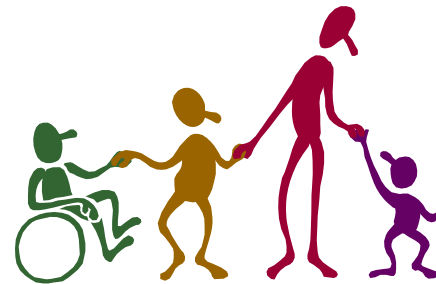




**Public Health**  
Prevent. Promote. Protect.

# ANNUAL REPORT For 2011

**Audrain City-County Health Unit**



(573) 581-1332  
FAX (573) 581-6652

605 East Promenade  
P.O. Box 957  
Mexico, Missouri 65265

[www.acchu.org](http://www.acchu.org)

**Home Health and Hospice**

(573) 581-6060  
1-866-581-5200

**Page left intentionally blank**

**PROGRAM SUMMARIES FOR 2011:**

Published 6 February 2012

A)	Administrative Report	Kevin W. Lowrance	K)	Hospice	Arlinda Wilson, RN
B)	Audrain County Medical Assistance Program (ACMAP) (United Way sponsored)	Kevin W. Lowrance/ Linda Spurling	L)	Human Services Council	Bev Borgeson
C)	Blood Pressure Screening (United Way sponsored)	Susie Deimeke, RN	M)	Immunizations (including High Risk Populations)	Brandi Meyer, LPN
D)	Communicable Disease Surveillance & Investigation	Becky Wieberg, RN	N)	Maternal Child Health (MCH)	Bev Borgeson
E)	Disaster Preparedness/ Emergency Response	Kevin W. Lowrance	O)	Pregnancy Testing	Susie Deimeke, RN
F)	Environmental Public Health Services	Randy Senor	P)	STD/STI	Susie Deimeke, RN
G)	Family Planning	Susie Deimeke, RN	Q)	Students	Kevin W. Lowrance/ Kay Dubbert, RN
H)	Foot Clinic	Kim Phillips, RN/Kay Dubbert, RN	R)	TB	Becky Wieberg, RN
I)	Health Education/Health Promotion/Media	Carol Stuart/Kay Dubbert, RN	S]	Vital Records	Linda Spurling
J)	Home Health	Arlinda Wilson, RN	T)	Walk-In Patients/Office Visits	Kay Dubbert, RN
			U)	Web Site	Susie Deimeke, RN
			V]	Women, Infants & Children (WIC]	Becky Wieberg, RN

\*\* A special thanks to **ALL** the ACCHU staff who make these programs possible & effective. \*\*

**A}**

## **Administrative Report**

### *Overview:*

The Audrain City-County Health Unit (ACCHU) proudly and diligently serves the Audrain County community, and is committed to addressing the public health needs of all individuals.

The ACCHU celebrated its 50<sup>th</sup> Anniversary in 2011. ACCHU exists as a result of an ongoing joint venture between the City of Mexico, the City of Vandalia, the Audrain Medical Center (AMC), and the Audrain County Commission. Representatives of each serve on the Audrain City-County Health Unit Board of Directors. Through a signed Compact Agreement, these entities provide support to ensure public health needs are achieved via the Audrain City-County Health Unit and the multiple programs it provides for the community.

The Audrain City-County Health Unit is here for you. By taking a proactive approach, rather than a reactive one, we can hope to positively affect and influence the lives of each and every one of us. Public Health really does affect and belong to each of us...most people just never think about how.

2011 was a critical year for ACCHU. Thanks to the citizens of Audrain County, the Health Center Initiative was passed during the November 2011 election; thus assuring the long term survival and viability of public health in Audrain County. Thank you!



D}

**Communicable Disease Surveillance & Investigation**

This service provides epidemiological surveillance, investigation, and follow-up for all reportable communicable diseases. Reports regarding specific reportable communicable diseases are provided to local healthcare providers on a quarterly basis. There are over 200 different reportable communicable diseases, with many of these having separate variants that are also reportable.

<b>2011 Totals for Various Reportable Diseases (not all inclusive)</b>	
<b>VACCINE PREVENTABLE</b>	
MEASLES	0
MUMPS	0
HEPATITIS A	0
INFLUENZA A AND B	87
PERTUSSIS	1
VARICELLA (CHICKEN POX)	1
NEISSERIA MENINGITIDIS	0
STREP PNEUMONIA MENINGITIS	0
INFLUENZA H1N1	0
<b>DIRECT CONTACT</b>	
MAMMAL BITE	19
EHRLICOSIS (TICK)	1
WEST NILE VIRUS	0
LYME DISEASE	0
TB DISEASE	1
TB INFECTION	1
ROCKY MOUNTAIN SPOTTED FEVER (RMSF)	0
TULAREMIA	0
<b>BLOOD BODY FLUIDS</b>	
HEPATITIS B	3
HEPATITIS C	8
HEPATITIS D/E	0
<b>FOOD/WATER BORNE</b>	
CAMPYLOBACTER	1
GIARDIA (PARASITE)	2

SALMONELLA	5
NORWALK VIRUS	0
YERSINIA ENTERCOLITICA	0
LEGIONELLA	0
SHIGELLA	4
SHIGA TOXIN +	0
<b>SEXUALLY TRANSMITTED</b>	
CHLAMYDIA	39
GONORRHEA	5
SYPHILIS	0
<b>TOTAL (avg. 15 per month)</b>	<b>178</b>

**E}**

**Disaster Preparedness/Emergency Response**

ACCHU works with community members, local governments, and other agencies to address many diverse issues such as, but not limited to Pandemic Influenza, Avian Influenza, Bio-Terrorism, Shelter Operations, and Man-Made or Natural Disasters.

	<b>Number of Occurrences</b>
# of exercises conducted or participated in	3
# of actual disasters *	3
<b>TOTAL (avg. 0.5 per month)</b>	<b>6</b>

\* Note: Actual disasters relate to 3 separate occurrences of truck wrecks involving food product.

**F}**

**Environmental Public Health Services**

Environmental Public Health Specialists provide a variety of services that include inspections of food establishments, residential on-site sewage systems/sewage permits through the Audrain County On-Site Sewage Ordinance, lodging establishment inspections, daycare licensure and inspection, and environmental issues / complaints. Consultation is also provided for general environmental health and/or sanitation concerns.

Food Service Inspections	
* City of Mexico	103
* City of Vandalia	27
* Audrain County (non-incorporated)	10
Food Service Consultations	20
Daycare Inspections (State of Missouri Licensed)	19
Lodging Inspections (State of Missouri Licensed)	8
Sewage Inspections	44
Sewage Permits	
* Construction	21
* Operating	4
Sewage Consultations	5
Grease Trap Inspections (City of Mexico only)	75
Rabies-Related Issues	5
Complaints (Various and non-specific)	41
Misc. Requests	50
Recalls (food related)	23

Private Water Consultations	2
Educational Presentations	17
Training Attended by EPHS	8
Misc. Environmental (Fire response)	3
Truck or other transportation wrecks involving food product	3

**G}**

**Family Planning**

Women’s reproductive health exams, pre-conception counseling, contraceptive care and counseling are available by appointment only. Clients may be referred to other care givers for additional treatment and/or follow-up care. Services are available for women through age 39.

<b>2011</b>	<b>Clients</b>	<b>Annual Exam</b>	<b>Initial Exam</b>	<b>Medical Reason*</b>	<b>Referred*</b>
<b>TOTAL</b>	133	74	52	7	20
<b>Average per month</b>	11	6	4	1	2

- NOTE: Medical reason relates to those individuals seen by ACCHU that require a follow-up visit at ACCHU.
- NOTE: Referred relates to those individuals sent to other healthcare professionals.

**H}**

**Foot Clinic**

The Diabetic and Elderly Foot Clinic services are available for elderly or diabetic individuals, by appointment only, who need specialized foot care; and are provided by a specially trained RN.

<b>2011</b>	<b>Clients</b>	<b>2011</b>	<b>Clients</b>
<b>January</b>	14	<b>July</b>	22
<b>February</b>	42	<b>August</b>	39
<b>March</b>	74	<b>September</b>	39
<b>April</b>	50	<b>October</b>	42
<b>May</b>	36	<b>November</b>	36
<b>June</b>	53	<b>December</b>	41
<b>TOTAL</b>			488
<b>Average per month</b>			41

**I}**

**Health Education/Health Promotion/Media**

Health education is integrated within all programs and clinics at ACCHU. Health education pamphlets are available for the general public upon request. Displays of available services and public health information are located at the ACCHU, Audrain County Courthouse, Vandalia City Hall, & Mexico City Hall; or via the ACCHU website (www.acchu.org). The ACCHU staff works one-on-one with individuals and provides presentations to groups, community organizations, etc. upon request. A comprehensive brochure of ACCHU services is available. An inaugural newsletter was finalized and produced during 2011; and will be at least a semi-annual event.

	<b>Number of Occurrences</b>
Press Releases issued by ACCHU	39
Interviews conducted by local or regional media	20
Speeches, presentations made by ACCHU to local, regional, or national groups	51
<b>TOTAL (avg. 9 per month)</b>	<b>110</b>

**J}**

**Home Health**

This service is provided by professional medical staff who visit qualifying patients in their home to provide top quality care. Qualifying patients must be homebound and require intermittent nursing services such as wound care, lab work, physical therapy, occupational therapy, and/or stabilization of present acute medical condition or medications. Home Health services are provided by Registered and Licensed Practical Nurses, and Physical, Occupational and Speech Therapists. A referral from a physician is required for Home Health services.

<b>ACCHU Patient Load – <u>Avg/Wk*</u></b>				<b>Patient Referrals received by ACCHU for HH or H services – <u>Avg/Wk*</u></b>		<b>ACCHU Patients per locale – <u>Avg/Wk*</u></b>			
Home Health	Hospice	Public Health-related-Weekly	Total – Weekly	AMC Referrals – Weekly	Referrals – Total Weekly	Mexico Area Patients - Weekly	Vandalia Area Patients - Weekly	Audrain County Patients - Weekly	Other Patient Locales - Weekly
26	2	1	29	1	5	3	1	1	1

- NOTE: All numbers are averages over the 52 week counting period in 2011.

**K}**

**Hospice**

This service is provided to terminally ill patients who choose to remain at home, in a nursing home environment, or with a relative to receive end-of-life palliative care. Hospice patients receive non-curative medical and support services for their terminal illness. The focus is on pain and symptom management, rather than on curative measures. Hospice services are provided by Registered and Licensed Practical Nurses, Medical Social Worker, Clergy, Physical and Occupational Therapists, and other volunteer-related services.

*See J – Home Health above for numbers for Hospice numbers.*

Grief Support Group – This group reaches out and is available for anyone that has experienced a loss including a spouse, child, parent, grandparent, or other.

<b>2011</b>	
Average Number of Attendees per Session	10

**L}**

**Human Services Council**

The council is an open forum format and is made up of community, social service, support, civic, and other like-minded individuals and groups that want to improve the living conditions and way of life for Audrain County residents.

<b>2011</b>	
Average Number of Attendees per Meeting	20

**M}**

**Immunizations (including High Risk Populations)**

Immunizations are provided for children and adults needing specific immunizations. In addition, the ACCHU High Risk Immunization Program provides immunizations to Audrain County Mennonite (Vandalia) and Amish (Western Audrain County) communities.

<b>Immunizations (as provided by ACCHU)</b>	<b>Number Vaccinated</b>
DTaP	45
Pentacel (DTaP, Hib, Polio)	35
KINRIX (DTaP & Polio)	18
Polio	21
Hepatitis A	15
Hepatitis B	47

Hib	10
HPV (VFC)	5
Menactra	8
MMR	48
Prevnar 13	48
Rotavirus	8
TD	3
Tdap	65
Varicella	2
Adult Hep A	0
Adult Hep B	36
Adult Menactra	1
Adult MMR	7
Adult TD	29
Adult Tdap	32
Shingles	46
HPV	21
Seasonal Flu Vaccine	538
H1N1 Influenza Vaccine	n/a
<b>TOTAL (avg. 91 immunizations per month)</b>	<b>1,088</b>

**N}**

### **Maternal Child Health (MCH)**

This program addresses the needs of pregnant women, mothers, infants, children and adolescents in order to protect, promote, and improve their health. With support from the Missouri Department of Health and Senior Services, ACCHU is identifying and developing intervention strategies to establish a comprehensive plan to address obesity and its negative effects within our community. Love & Logic classes are offered throughout the year and are designed to encourage healthier parental relationships as well as healthier bodies and minds. A nutrition component has been added to the Love & Logic parenting classes offered by ACCHU. The 'Audrain County Directory of Health & Social Services' is updated. It can be found on the ACCHU website, or a hard copy can be requested by calling the ACCHU office.

Love & Logic Parenting and Nutritional Education Classes

<b>Date - 2011</b>	<b>Location</b>	<b>Number in Attendance</b>
February - March	Community R-VI	10 registered/7 completed
March - April	ACCHU Facility; Mexico, Missouri	9 registered/7 completed
October - November	ACCHU Facility; Mexico, Missouri	7 registered/3 completed
<b>TOTAL</b>		<b>26 registered/17 completed</b>

**O}**

**Pregnancy Testing**

These tests are provided for all females requesting a test, or when needed to confirm no pregnancy and can receive a contraceptive injection.

<b>2011</b>	<b>Number of Pregnancy Tests Provided</b>
<b>TOTAL (avg. 11 tests per month)</b>	<b>126</b>

**P}**

**STD/STI**

ACCHU provides services related to sexually transmitted diseases and/or sexually transmitted infections, and accomplishes HIV, RPR (Syphilis), GC/CT (Gonorrhea/Chlamydia) testing per Missouri Infertility Prevention Project (MIPP) through a contract with the Missouri Department of Health and Senior Services; and other testing through a private lab.

<b>2011</b>	
# of clients	216
Average # of clients per month	18
# of tests	498
Average # of tests per month	42

**Q}**

### **Students**

ACCHU cooperates with schools of higher education in order to help ensure the proficiency and quality of students as they prepare for entering the workplace. The University of Missouri School of Medicine, the University of Missouri Sinclair School of Nursing, the University of Missouri School of Veterinary Medicine, and Truman University are just a few that have sent students to ACCHU for internships and field study. *It's important to note that ACCHU is the only local public health agency officially on the syllabus at the University of Missouri School of Medicine.*

Nursing Students: Two (2) Bachelor of Science in Nursing (BSN) students from the University of Missouri at Columbia Sinclair School of Nursing worked with ACCHU during 2011. Both worked with ACCHU staff on WIC, Family Planning, STD/STI testing and treatment, pregnancy testing, Home Health & Hospice, and Environmental Public Health Services. One student's capstone project was research, development of a presentation, and assisting with development of a pamphlet directed towards parents of middle school children to help the parents discuss sex and sexually transmitted diseases. The other student's capstone project was research and assistance in a Susan Komen grant for breastfeeding support.

Medical Physician Students: Two (2) 4<sup>th</sup> year Medical Students from the University of Missouri School of Medicine interned at ACCHU during CY11. Both rotated through the various ACCHU programs and clinics for a month period then wrote on their unique experience. All written documents were provided to the ACCHU Board of Directors.

Other Students: None were scheduled during 2011.

**R}**

**TB**

Tuberculosis Skin Testing (TST) is available by the One-Step or the Two-Step test procedure.

<b>2011</b>	<b>Number Tested</b>
<b>TOTAL (avg. 14 tests per month)</b>	<b>173</b>

**S}**

**Vital Records**

Birth certificates are available for people born in the State of Missouri from 1920 to present. Death certificates are available for people who have died in the State of Missouri from 1980 to present. Some birth and death certificates have to be obtained directly from the State, but our staff can assist you. Additionally, information is also available regarding obtaining birth certificates for people born outside the State of Missouri. Everyone requesting a birth or death certificate must show a form of identification, such as a picture ID, two documents showing signature, check book, insurance card, or old birth certificate. Persons who can request a record include the individual on the certificate, wife, husband, mother, father, son, daughter, brother, sister, grandparents, grandchildren, aunt, uncle, niece, or nephew. Those who cannot request a record include cousins and a father whose name is not on the official record (or any of his family members). Most records are available for adopted individuals if that person was born in the State of Missouri. If the adopted person was not born in the State of Missouri, then the Department of Health and Senior Services should be contacted.

- Certified copies of birth and death certificates issued by ACCHU for 2011:

Death Certificates	1763
Average per month	147
Birth Certificates	1649
Average per month	137

- Certificates filed at the State of Missouri for events occurring in Audrain County for 2011, as required by law:

Fetal Death	0
Death	259
Average per month	22
Birth	0*
Average per month	0*

- NOTE: Beginning May 2010, birth certificates were filed directly with the State of Missouri Department of Health and Senior Services and not by local public health agencies.

**T}**

**Walk-In Patients/Office Visits**

Limited services are provided daily to walk-in patients for TB testing, blood sugars, pre-filling medication packs, etc. Various injections may be done with a Physician’s order.

NOTE: These visits are not direct services and are conducted outside of the regularly scheduled clinic timeframes for the associated program. For details on program specific visits see the applicable program.

	<b>Number of Clients</b>
TB Home Visits – DOT	96
Public Health-related, including Blood Pressure Screening	353
Communicable Disease-related	499
Family Planning-related	388
WIC-related	32
Immunization-related	374
<b>TOTAL (avg. 145 per month)</b>	<b>1,742</b>

U}

**Web Site**

[www.acchu.org](http://www.acchu.org); Susie Deimeke, RN serves as the webmaster.

<b>2011</b>	
# of website hits	2,755
Average per month	230
Average per day	8

V}

**Women, Infants, & Children (WIC)**

WIC is a supplemental food program for women (pregnant, breastfeeding, and postpartum), infants and children (through 4 years of age). Participants have to meet financial guidelines and have a nutritional risk to qualify for WIC. Participants receive food vouchers that may be redeemed at participating stores for milk, cheese, juice, eggs, beans, peanut butter, cereal, whole grain foods, fruits, and vegetables, and upon request infant formula.

	<b>Number of Clients</b>
ACCHU Facility	6,807
Vandalia Facility	901
<b>TOTAL (avg. 677 per month)</b>	<b>7,708</b>

Breastfeeding Support Group is offered monthly for any prenatal or postpartum breastfeeding woman and family. There were a total of twelve (12) participants in calendar year 2011.

END